

## Teamviewer Setup Instructions for Remote Desktop Support from I.T Design.

**Please do not distribute the information contained in this document!**

### Step 1:

Download Teamviewer software from [http://www.teamviewer.com/download/TeamViewer\\_setup.exe](http://www.teamviewer.com/download/TeamViewer_setup.exe)

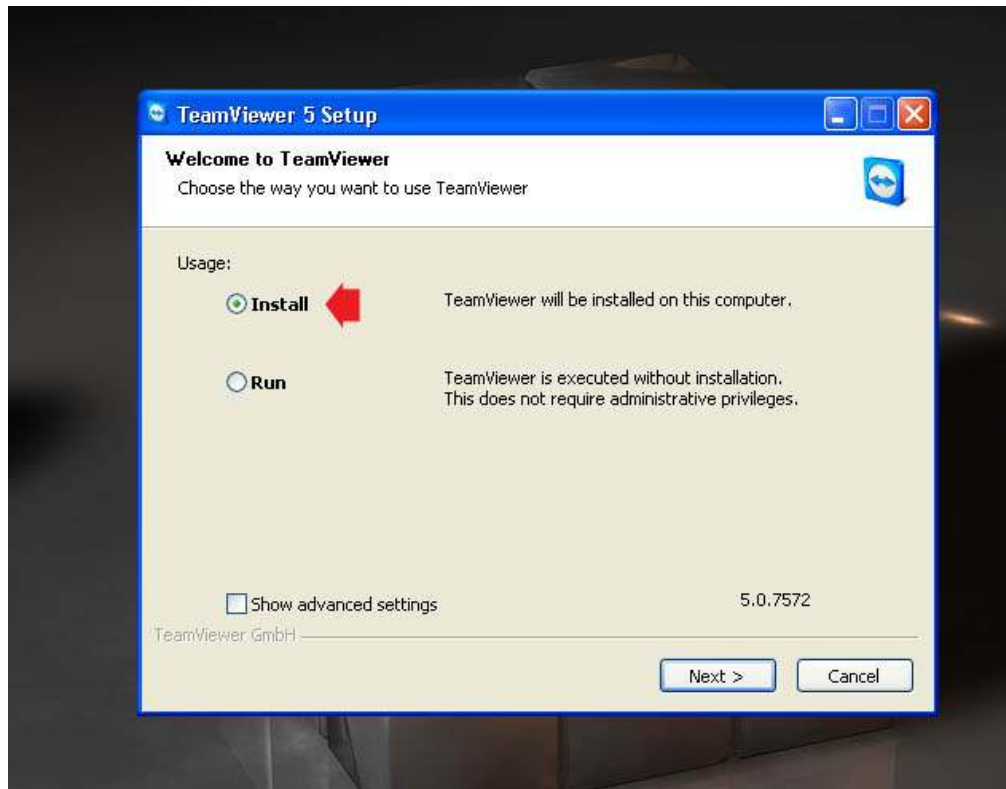
### Step 2:

Double click the Teamviewer Setup icon in your download location:



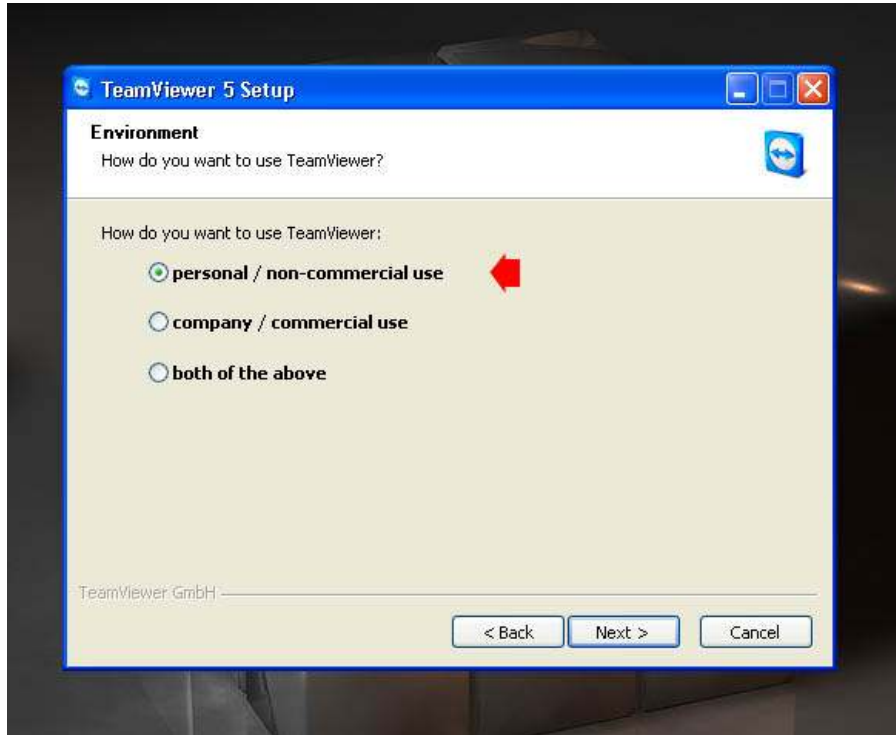
### Step 3:

Choose options below and click next;



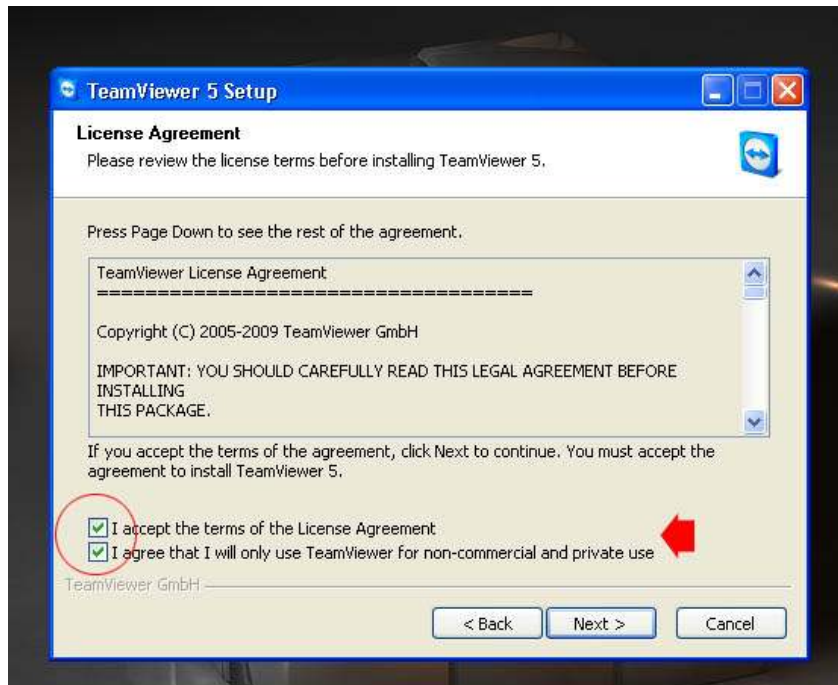
## Step 4:

Choose options below and click next;



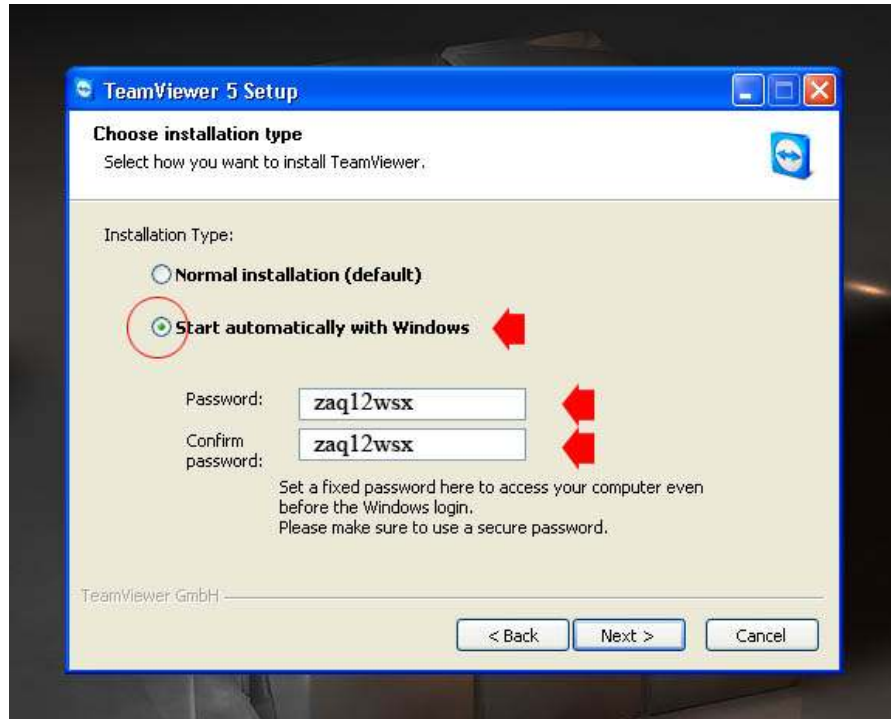
## Step 5:

Choose options below and click next;



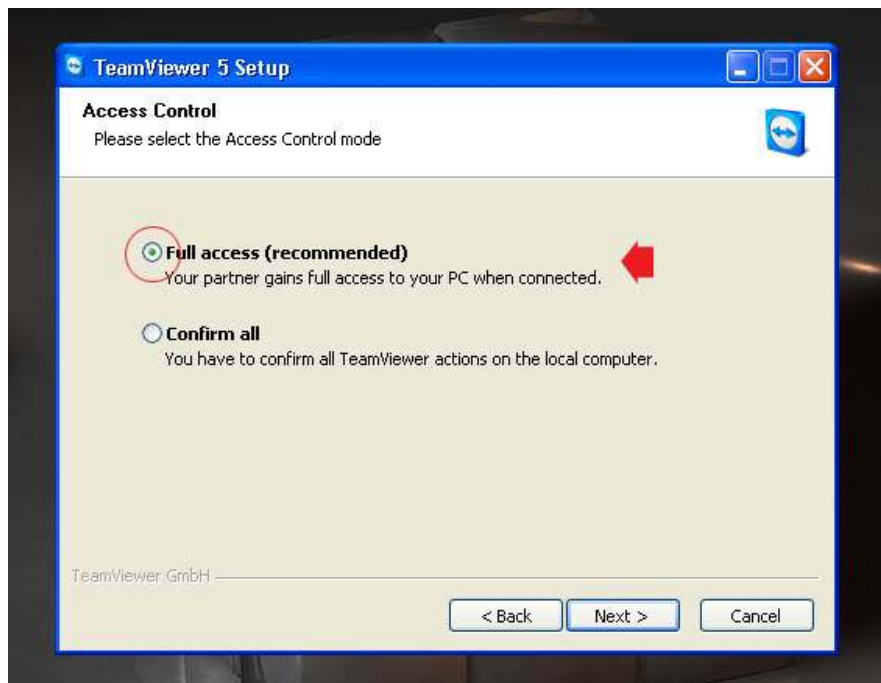
## Step 6:

Choose start automatically with Windows;  
Complete the password provided below in the fields provided and click next;



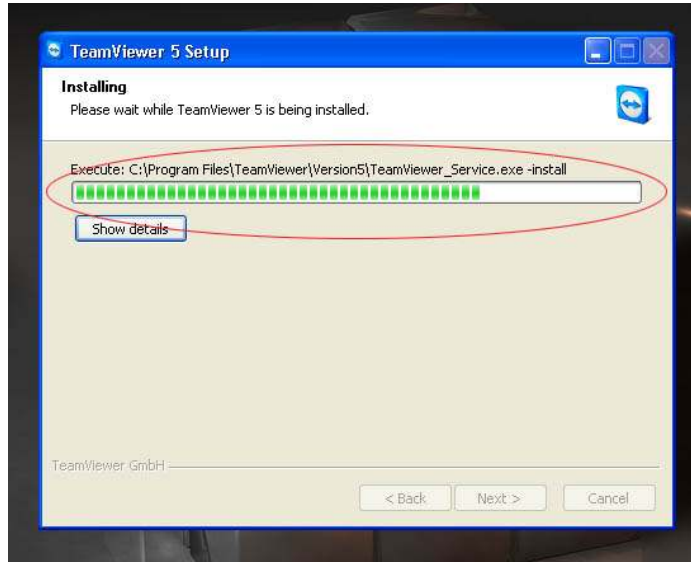
## Step 7:

Choose options below and click next;



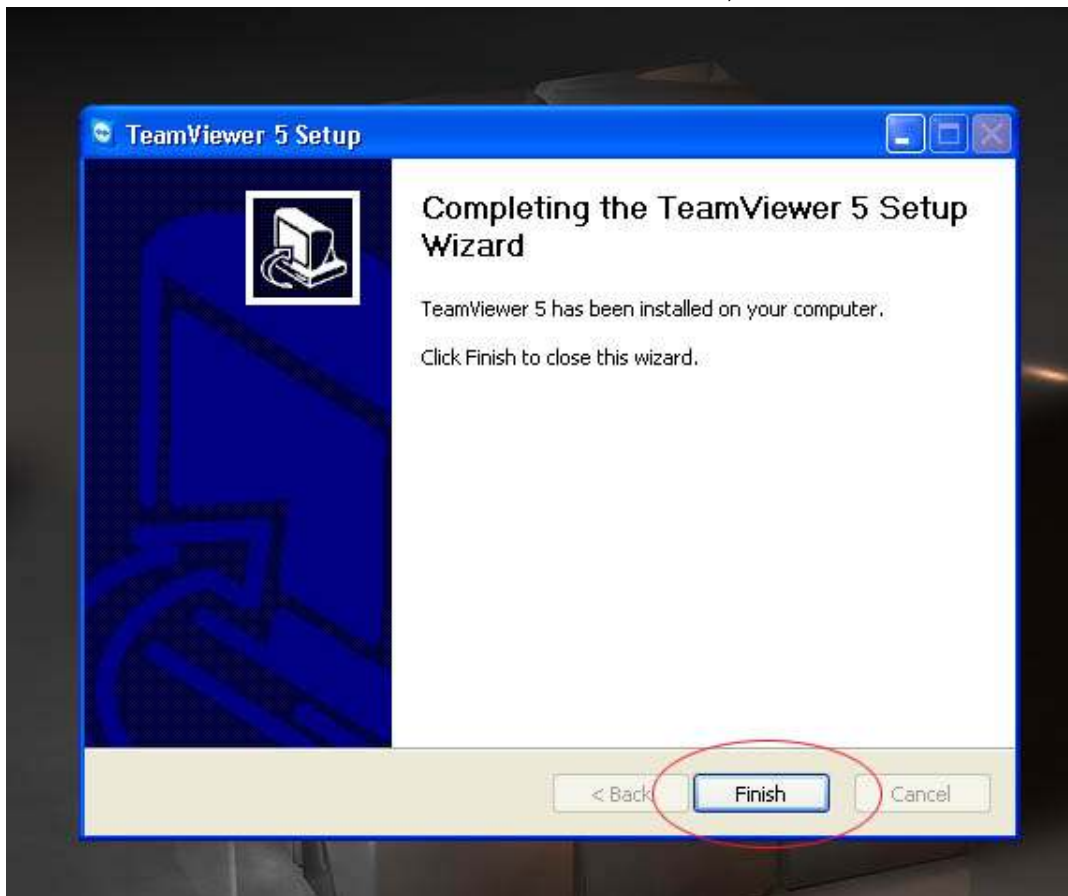
## Step 8:

Teamviewer will now install. During the install the screen below will appear. After install go to next step;



## Step 9:

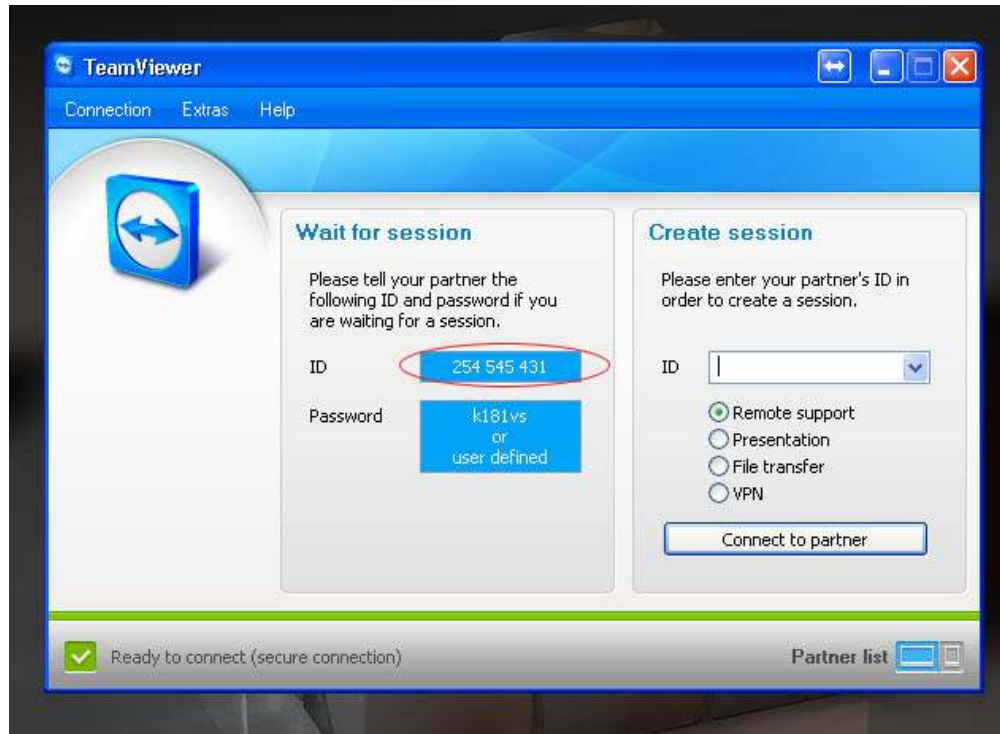
Click finish to finalise the installation;



## Step 10:

After installation this screen will appear;

Skype, email, sms or phone the ID number of your Teamviewer Session to our office.



## Finally (IMPORTANT):

Teamviewer will give I.T Design the ability to render remote desktop support (The ability to log onto your pc and do settings etc. without being physically at your home or office). We can only log onto your pc if the Teamviewer icon is available in your taskbar (indicated by the red arrow below). Please ensure that Teamviewer is available when requesting remote support. You can launch the program from your programs menu. Double click the Teamviewer icon in the Teamviewer folder on the programs menu to allow a remote session.

